



## PROVISIONAL SPECIFICATION.

No. 26,958, A.D. 1924.

**Improvements in or relating to Pen Covers.**

I, LESLIE ROY WADE, of 4, Duke Street, Adelphi, London, W.C. 2, a British subject, do hereby declare the nature of this invention to be as follows:—

In my Specification No. 21,461/24 I have described an improved means of covering the nib-holder and pen point of fountain pens and the like, having for its objects the simplifying of the operation so that it can be operated with the fingers of one hand with ease, and cheapness of manufacture.

According to that invention I provide on the nib end of a fountain pen a slidable sleeve or sheath of vulcanite or other suitable material, said sleeve or sheath being more or less cone shaped and having extending longitudinally from the apex of the cone a plurality of longitudinal slits or cuts, so as to allow circumferential expansion of this portion of the sheath.

Normally the nib and feed of the pen are housed in the tapered portion of the said sheath and when it is required to use the pen for writing purposes said sheath is retracted along the barrel when the inside of the tapered portion comes into contact with the nib section, thus circumferentially expanding the tapered portion so that it effectively clears the nib and exposes same for use.

So as to ensure that there will be ample clearance between the nib and the inside of the tapered portion of the said sheath, I may suitably shape the interior of said tapered portion of said sleeve or sheath and, or, the exterior of the section.

This invention relates to an improved alternative means for effecting the circumferential expansion of the tapered portion of the sleeve and for determining the necessary longitudinal movement of the cap or sleeve on the body of the pen.

According to this invention the circumferential expansion of the tapered slit portion of the sleeve may be alternatively effected by its inside portion when retracted coming into contact with the barrel, suitably shaped for the purpose, instead of with the nib section. And the necessary longitudinal movement of the cap, instead of being determined by means of suitable grooving in cap or barrel and a pin to travel in such grooving, may alternatively be accomplished by providing within the said cap or sleeve two annular grooves into which a portion of the specially shaped nib section or barrel may enter and come firmly to rest, forcing apart the longitudinally slit portions or fingers of the sheath in course of passing from one of the said annular grooves to the other, and holding the cap or sheath firmly in open position for writing or closed position for the pocket when at rest in the rear or fore annular groove respectively.

I may suitably shape the interior of the said tapered portion of said sleeve or sheath and, or, the exterior of the section or barrel so that the contour of the external portion of the cap which is slit may appear symmetrical with that portion of the cap or cover which is not slit.

Dated this 11th day of November, 1924.

L. R. WADE.

## COMPLETE SPECIFICATION.

**Improvements in or relating to Pen Covers.**

I, LESLIE ROY WADE, of 4, Duke Street, Adelphi, London, W.C. 2, a British subject, do hereby declare the nature of this invention and in what manner the same is to be performed, to be particularly described and ascertained in and by the following statement:—

This invention relates to fountain or reservoir pen covers, caps or sheaths, and has for its object to enable the operations

of displacing and repositioning a nib or writing-end cap or sheath to be effected by the fingers of one hand, the cap or sheath being simple in construction, cheap to manufacture, and adapted for complete removal from the pen body or barrel preparatory to the latter being charged with ink, and to permit of the body or barrel (by the removal of the cap or sheath and its fitment on the rear or

shank end of the body or barrel) being, in effect, converted from one of large to one of small diameter, as desired.

I am aware that it has been proposed to construct pencil point protectors with tapered points divided by slits in order to form pliable jaws.

In carrying out my invention, I provide a slidable nib or writing-end cover, cap or sheath of vulcanite, or other suitable material, a portion whereof is of more or less tapered or conical shape and is provided with a plurality of slits or saw-cuts which extend longitudinally from the apex of the cone to a suitable position along the cap or sheath, in order to permit of circumferential expansion of and to impart a natural springiness or elasticity to this portion of the cap, by which the arms (created by the aforementioned saw-cuts) are returned to closed position when said cap or sheath is projected; a pen body or barrel; and means whereby said cap or sheath is positively maintained in projected and retracted positions on said body or barrel.

An external rubber ring, or other suitable means, may be provided for protecting the slit or saw-cut portion of the cap or sheath against accidental breakage.

The accompanying sheet of explanatory drawings illustrates, by way of example only, one mode of embodying my invention.

In said drawings:—

Figs. 1 and 2 are, respectively, part sectional elevation and plan of a portion of a fountain or reservoir pen showing the writing nib housed in the cap or sheath.

Figs. 3 and 4 are views similar to Figs. 1 and 2, but showing the cap or sheath partially retracted on the body or barrel.

Figs. 5 and 6, are, respectively, part sectional elevation and plan showing the cap or sheath wholly retracted, and the pen ready for use.

Fig. 7 is an elevation of the cap or sheath detached.

Fig. 8 is a detail of a portion of a cap or sheath provided with a protecting ring or band of rubber; Fig. 9 showing said ring or band detached.

In said drawings:—

*a* represents the body or barrel of the pen, and *b* the nib "section" carrying the customary nib *c* and "feed" *d*.

*e* generally designates a sleeve-cap or sheath which is slidably mounted on said body or barrel *a*. Said cap or sheath *e* has a tapered portion *e*<sup>1</sup> wherein are formed longitudinal sawcuts *f* which allow of the circumferential expansion of and impart a natural springiness or elasticity to this portion,

In Figs. 1 and 2, the nib *c* and "feed" *d* are totally enclosed or housed in the tapered portion *e*<sup>1</sup> of the cap or sheath *e*, which is positively maintained in position—until it is wilfully retracted—through engagement of the bevelled rib or flange *b*<sup>1</sup> of the nib "section" *b* with an annular recess *e*<sup>2</sup> provided in the spring portion of the cap or sheath *e*.

On the pen being required for use, the cap or sheath *e* is retracted along the barrel *a*, when the inside surface of the tapered spring portion *e*<sup>1</sup> comes in contact with the bevelled rib or flange *b*<sup>1</sup> of the nib "section" *b*, thus circumferentially expanding the tapered or conical spring portion *e*<sup>1</sup> so that it effectively clears the nib *c* and "feed" *d*, its rearward movement being limited by the abutment of the inward lip or flange *e*<sup>3</sup> against the rib or flange *b*<sup>1</sup> of the "section" *b*, as shown in Fig. 5.

A second annular grooved recess *e*<sup>4</sup> is formed in the cap or sheath *e*, with which recess the bevelled rib or flange *b*<sup>1</sup> of the nib "section" *b* engages and positively prevents forward movement of the cap or sheath—until it is wilfully projected—along the barrel when the pen nib *c* is exposed for writing.

If preferred, in lieu of the grooved recesses *e*<sup>2</sup>, *e*<sup>4</sup>, an annular groove may be formed in the "section" *b* or barrel *a*, and suitably spaced co-operating ribs or flanges provided on the inside of the cap or sheath; or spaced ribs or flanges may be provided on the barrel and an annular groove formed in the inside of the cap or sheath.

On the writing operation being concluded, said cap or sheath is slid back to the position shown in Fig. 1, the natural springiness or elasticity of the tapered or conical portion *e*<sup>1</sup> causing same to close and thus completely house the nib.

When it is required to charge the pen with ink, the cap or sheath *e* is completely slid from the body or barrel *a*, and the pen filled as customary.

In a modified arrangement, in order to determine the necessary longitudinal movement of the cap or sheath on the pen body or barrel, I may provide a pin extending interiorly from said cap or sheath, which pin is adapted to engage in a suitable slot in the pen body or barrel; or, alternatively, a pin provided on the barrel may be adapted to engage in a suitable slot provided in the said cap or sheath.

In order to avoid accidental breakage of the arms created through the slitting or saw-cutting of the cap or sheath, a band *g* of rubber, or other suitable material, as shown in Figs. 8 and 9, may

be fitted in an annular groove  $e^5$  cut in the cap or sheath  $e$ .

Although my invention has been described in its application to a fountain pen, it may be obviously applied to a stylographic reservoir pen.

Having now particularly described and ascertained the nature of my said invention and in what manner the same is to be performed, I declare that what I claim is:—

1. A fountain or reservoir pen cover, cap or sheath of vulcanite, or other suitable material, a portion whereof is of more or less tapered or conical shape and provided with a plurality of slits or saw-cuts which extend longitudinally from the apex of the cone to a suitable position along the sleeve or sheath, in order to permit of circumferential expansion of and to impart a natural springiness or elasticity to this portion of the cap or sheath; a pen body or barrel; and means whereby said cap or sheath is positively maintained in projected and retracted positions on said body or barrel.

2. A fountain or reservoir pen cover, cap or sheath as claimed in Claim 1, provided with suitably spaced annular grooves or recesses; and a pen body the barrel or "section," whereof is provided with a rib or flange with which said cap grooves or recesses co-operate.

3. A fountain or reservoir pen cover, cap or sheath as claimed in Claim 1, provided with spaced ribs or flanges; and a

pen body the barrel or "section" whereof is provided with an annular groove or recess with which said cap ribs or flanges co-operate.

4. A fountain or reservoir pen cover, cap or sheath as claimed in Claim 1, in the inside of which an annular groove or recess is formed; and a pen body or barrel provided with spaced ribs or flanges with which said cap groove or recess co-operates.

5. In improvements relating to fountain or reservoir pen covers, caps or sheaths, as claimed in any of the preceding Claims 1, 2, 3 and 4, a cap or sheath provided with an annular groove in which a band of rubber, or the like, is disposed for the purpose specified.

6. A fountain or reservoir pen complete with cover, cap or sheath, substantially as hereinbefore described, and illustrated in Figs. 1 to 7 and Figs. 8 and 9 of the accompanying drawings.

7. For application to a fountain or reservoir pen the nib "section" or barrel whereof is provided with a projection or projections or recess or recesses, a cover, cap sleeve or sheath constructed substantially as described and adapted to co-operate with said "section" or barrel for the purpose specified.

Dated this 3rd day of July, 1925.

JOHN HINDLEY WALKER,  
139, Dale Street, Liverpool,  
Registered Patent Agent.

[This Drawing is a reproduction of the Original on a reduced scale.]

Fig. 1.

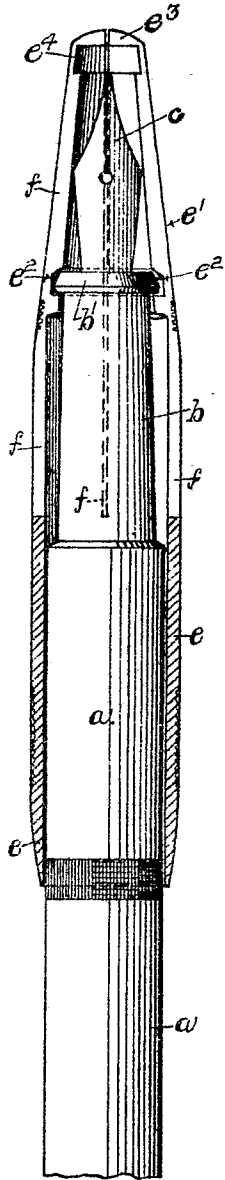


Fig. 3.

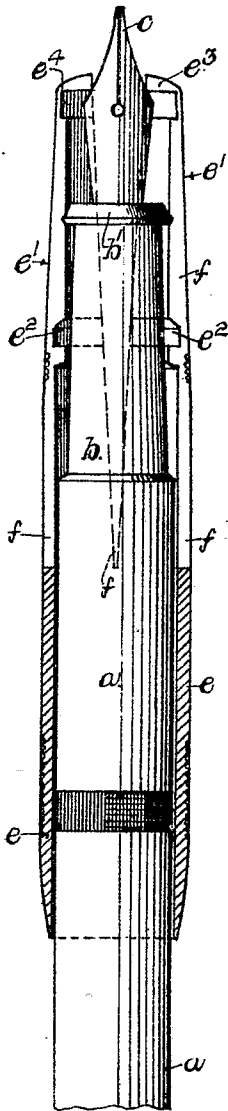


Fig. 5.

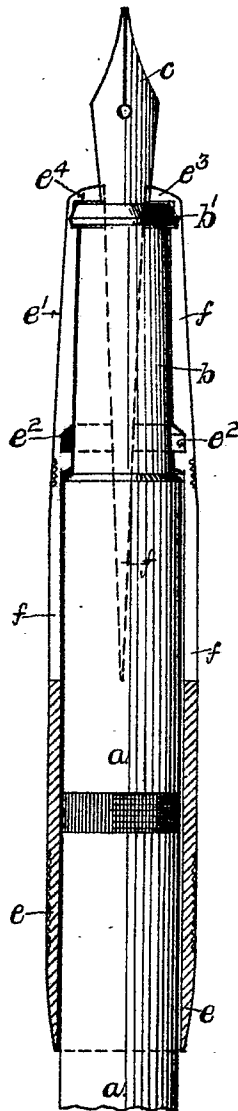


Fig. 7.

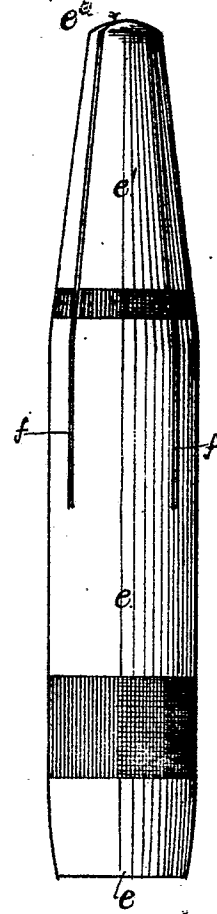


Fig. 8.

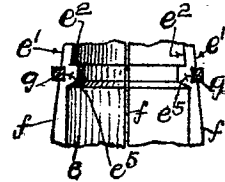


Fig. 2.

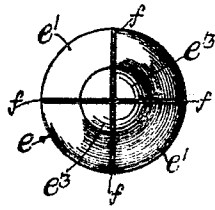


Fig. 4.

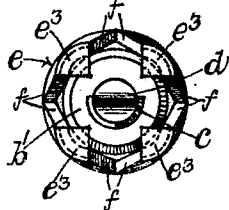


Fig. 6.

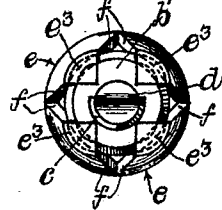


Fig. 9.

