

H. P. RAVN.  
FOUNTAIN PEN.  
APPLICATION FILED OCT. 29, 1917.

1,258,458.

Patented Mar. 5, 1918.

Fig. 1.

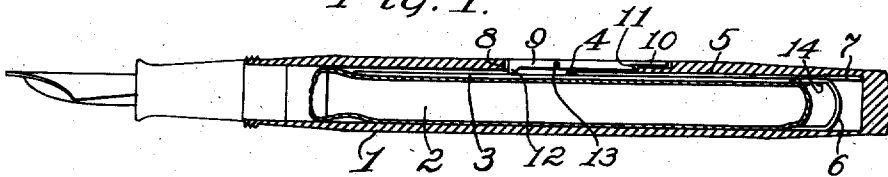


Fig. 2.

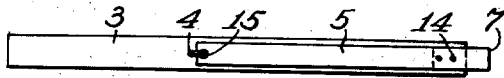
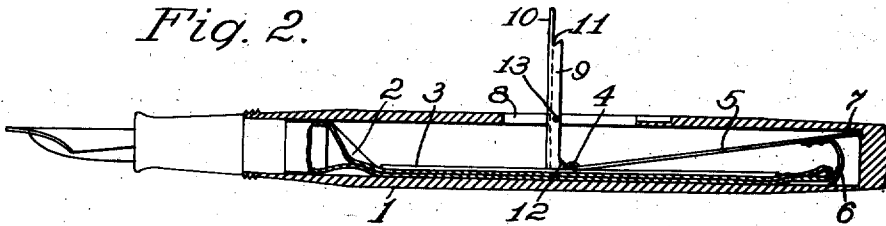


Fig. 3.

Inventor,  
Hans Peter Ravn, by  
G. B. Kennedy,  
Attorney.

# UNITED STATES PATENT OFFICE.

HANS PETER RAVN, OF WATERLOO, IOWA.

## FOUNTAIN-PEN.

1,258,458.

Specification of Letters Patent.

Patented Mar. 5, 1918.

Application filed October 29, 1917. Serial No. 199,005.

*To all whom it may concern:*

Be it known that I, HANS PETER RAVN, a citizen of the United States of America, and a resident of Waterloo, Blackhawk county, Iowa, have invented certain new and useful Improvements in Fountain-Pens, of which the following is a specification.

My invention relates to improvements in fountain pens, and the objects of my improvements are first, to furnish a return spring for the ink-containing sack presser-bar having a loosely hinged connection therewith; second, to furnish said presser-bar return spring with an elastic terminal abutment and spacing extension, and third, to supply a pivoted lever for depressing said presser-bar, said lever having special engaging-means at its free end.

These objects I have accomplished by the means which are hereinafter described and claimed, and which are illustrated in the accompanying drawings, in which Figure 1 is an elevation of a fountain pen embodying my improvements, with the barrel and ink-containing sack therein shown in longitudinal section, and the said sack uncompressed; Fig. 2 is a like view of said fountain pen with the ink-containing sack compressed, and Fig. 3 is a plan view of the presser-bar with its return spring hingedly connected thereto.

Similar numerals of reference denote corresponding parts throughout the several views.

The fountain pen shown is of the well-known type in which a closed end barrel 1 contains a closed end elastic ink-containing sack 2. A flat presser-bar 3 is positioned longitudinally upon said sack under a longitudinal medial slot 8 in said barrel 1. The numeral 4 denotes a longitudinally directed staple fixed on the middle of the upper surface of said presser-bar, and the flat return spring 5 has one end orificed at 15, one limb of said staple being received through said orifice to hingedly and loosely connect that end of the return spring to the presser-bar to permit the spring to freely swing to and from the presser-bar without binding or exercising any constraint upon the presser-bar while swinging.

The numeral 6 denotes a U-shaped flat spring having one end fixedly secured by means of small rivets 14 to a place on said return spring 5 removed a short distance from its free extremity, said extremity thus

extending at 7 beyond the hook 6 for a purpose to be described. The U-shaped or hooked spring member 6 has its free member passed under the closed end of the ink-containing sack 2 a short distance, but this is not essential. The numeral 9 denotes a longitudinally-troughed lever medially pivoted on a pintle 13 fixed across the slot 8 of said barrel, so that one end of the lever may swing into the barrel to engage the middle part of said presser-bar and compress the latter upon the sack 2 to collapse and empty the latter.

The extension end 7 of the return-spring 5, while the device is being manufactured, can be suitably proportioned in length so as to insure that when the presser-bar and spring 5 are pushed completely within the barrel to have the extension 7 contact with the end wall of the barrel, the staple 4 will be so located as to become a stop against which may impinge a small raised element 12 on the lower end of the lever 9 to prevent the latter from swinging in one direction beyond the perpendicular to the presser-bar 3. When the lever 9 is swung in a reverse direction, the return spring acts to close it into its slotted seat 8, as shown in Fig. 1. The lower edge of the free extremity 10 of the lever 9 is cut back or removed a short distance and provided with a reëntrant notch 11 which furnishes an acute detent at that place. When a card is slipped under the extremity 10, it will enter the reëntrant notch 11, said acute detent preventing the card slipping along the lever toward the pintle 13, and thus making it easier and more convenient to thus start swinging the lever to the position shown in Fig. 2.

Having described my invention, what I claim as new, and desire to secure by Letters Patent, is:

1. A fountain pen comprising a barrel, an ink-containing sack therein, a presser bar element for the sack, and a return spring element for the presser bar hinged thereto, said spring having at its free end a hook, the extremity of the spring extending a distance beyond the hook to engage the adjacent end wall of the barrel.

2. A fountain pen comprising a barrel, an ink-containing sack therein, a presser bar element for the sack, a return spring element for the presser bar having one end hinged to an intermediate part thereof, said hinge-connection comprising a staple on

2  
the presser bar and an orifice in the return  
spring in which one limb of the staple is  
mounted loosely, said barrel containing a  
slot and a lever medially pivoted in said  
5 slot with one end movable against said  
presser-bar and having its movement there-  
over limited by engagement with said staple.

3. A fountain pen comprising a barrel,  
an ink containing sack therein, a presser-bar  
10 element for the sack. and a return spring

device for the presser-bar, hingedly con-  
nected thereto, said device having a hook  
part bent about the closed end of the ink  
containing sack, and having a part extend-  
ing beyond said hook contacting with the 15  
adjacent end wall of the barrel.

Signed at Waterloo, Iowa, this 12th day  
of October, 1917.

HANS PETER RAVN.